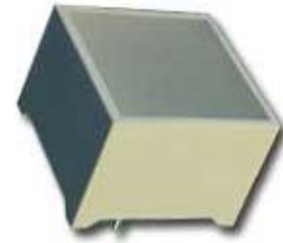




## 15 × 15 light bar

### ◆ Features:

- Emitting area : 15×15 (mm)
- High efficiency, low power consumption.
- Excellent characters appearance.
- Solid state reliability.
- Categorized for luminous intensity.



### ◆ Descriptions:

- The JYLB1515S have uniform emitting light.
- These devices are made with white segments and white surface.

### ◆ Application

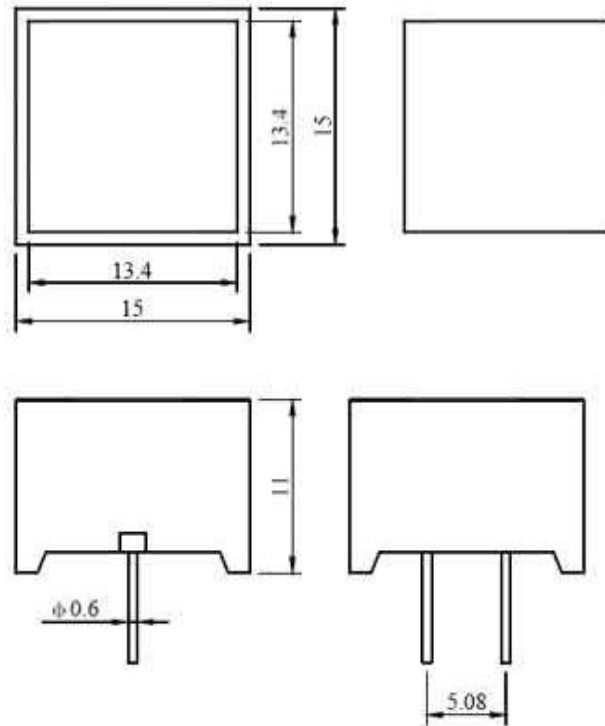
- Instrument panels.
- Digital read out display.

### ◆ Selection Guide:

Part No.	Emitting Color
JYLB1515SA2SR	Super Red
JYLB1515SA2G	Green
JYLB1515SA2Y	Yellow
JYLB1515SC4SR	Super Red
JYLB1515SC4G	Green
JYLB1515SC4Y	Yellow



◆ Package Dimensions:

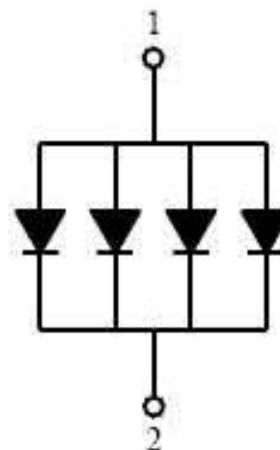


NOTES:

All dimensions are in millimetres (mm), Tolerance is  $\pm 0.25\text{mm}$  unless otherwise noted.  
Specifications are subject to change without notice.



JYLB1515SA2



JYLB1515SC4



◆ Absolute Maximum Rating (Ta=25°C)

JYLB1515SA2

Parameter	Symbol	Super Red	Green	Yellow	Unit
Power Dissipation	Pd	100	120	120	mW
Peak Forward Current (Duty 1/10@ 1KHz)	IFP	60	60	60	mA
Continuous Forward Current ①	IF	20	20	20	mA
Recommend use current②	IF	5~10	5~10	5~10	mA
Reverse Voltage	VR	8	8	8	V
Operating Temperature Range	Topr	-25~ +75			°C
Storage Temperature Range	Tstg	-30 ~ +85			°C
Solder Temperature③	Tsol	260±5			°C

- Notes: 1、 This is the limit current . It is not allowed to use when the product work continuously.  
2、 It is recommended that the product is driven by TTL,CMOS.  
3、 Soldering time≤5 seconds.

◆ Electrical Optical Characteristics ( Ta=25°C )

JYLB1515SA2

Parameter	Symbol	Super Red		Green		Yellow		Unit	Test Condition
		Typ.	Max.	Typ.	Max.	Typ.	Max.		
Luminous Intensity	IV	11	--	6.0	--	6.0	--	mcd	IF=10mA
Forward Voltage	VF	3.7	4.6	4.4	5.0	4.0	5.0	V	IF=20mA
Reverse Current	IR	--	50	--	50	--	50	uA	VR=5V
Dominant Wavelength	$\lambda_d$	645	--	565	--	585	--	nm	IF=20mA
Spectral Line Half Width	$\Delta \lambda$	30	--	30	--	30	--	nm	IF=20mA



◆ Absolute Maximum Rating (Ta=25°C)

JYLB1515SC4

Parameter	Symbol	Super Red	Green	Yellow	Unit
Power Dissipation/Segment	Pd	190	220	2200	mW
Peak Forward Current /Segment (Duty 1/10@ 1KHz)	IFP	200	200	200	mA
Continuous Forward Current /Segment①	IF	80	80	80	mA
Recommend use current /Segment ②	IF	30~40	30~40	30~40	mA
Reverse Voltage /Segment	VR	5	5	5	V
Operating Temperature Range	Topr	-25~ +75			°C
Storage Temperature Range	Tstg	-30 ~ +85			°C
Solder Temperature③	Tsol	260±5			°C

- Notes: 1、 This is the limit current . It is not allowed to use when the product work continuously.  
2、 It is recommended that the product is driven by TTL,CMOS.  
3、 Soldering time≤5 seconds.

◆ Electrical Optical Characteristics (Ta=25°C)

JYLB1515SC4

Parameter	Symbol	Super Red		Green		Yellow		Unit	Test Condition
		Typ.	Max.	Typ.	Max.	Typ.	Max.		
Luminous Intensity	IV	23	--	12	--	12	--	mcd	IF=10mA
Forward Voltage	VF	1.85	2.3	2.2	2.5	2.0	2.5	V	IF=20mA
Reverse Current	IR	--	50	--	50	--	50	uA	VR=5V
Dominant Wavelength	$\lambda d$	645	--	565	--	585	--	nm	IF=20mA
Spectral Line Half Width	$\Delta \lambda$	30	--	30	--	30	--	nm	IF=20mA