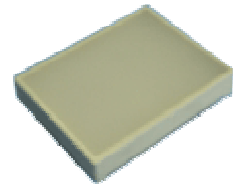




58 × 45mm light bar

◆ Features:

- Emitting area : 58 × 45mm
- High efficiency, low power consumption.
- Excellent characters appearance.
- Solid state reliability.
- Categorized for luminous intensity.



◆ Descriptions:

- The JYBD5845SA32 have uniform emitting light.
- These devices are made with white segments and white surface.

◆ Application

- Instrument panels.
- Digital read out display.

◆ Absolute Maximum Rating (Ta=25°C)

| Parameter | Symbol | Super Red | Green | Yellow | Unit |
|---|--------|-----------|-------|--------|------|
| Power Dissipation | Pd | 1000 | 1100 | 1100 | mW |
| Peak Forward Current (Duty 1/10@ 1KHz) | IFP | 350 | 350 | 350 | mA |
| Continuous Forward Current /Segment | IF | 120 | 120 | 120 | mA |
| Recommend use current /Segment | IF | 50~60 | 50~60 | 50~60 | mA |
| Reverse Voltage | VR | 12 | 12 | 12 | °C |
| Operating Temperature Range | Topr | -25~ +75 | | | °C |
| Storage Temperature Range | Tstg | -30 ~ +85 | | | °C |
| Solder Temperature ③ | Tsol | 260±5 | | | °C |

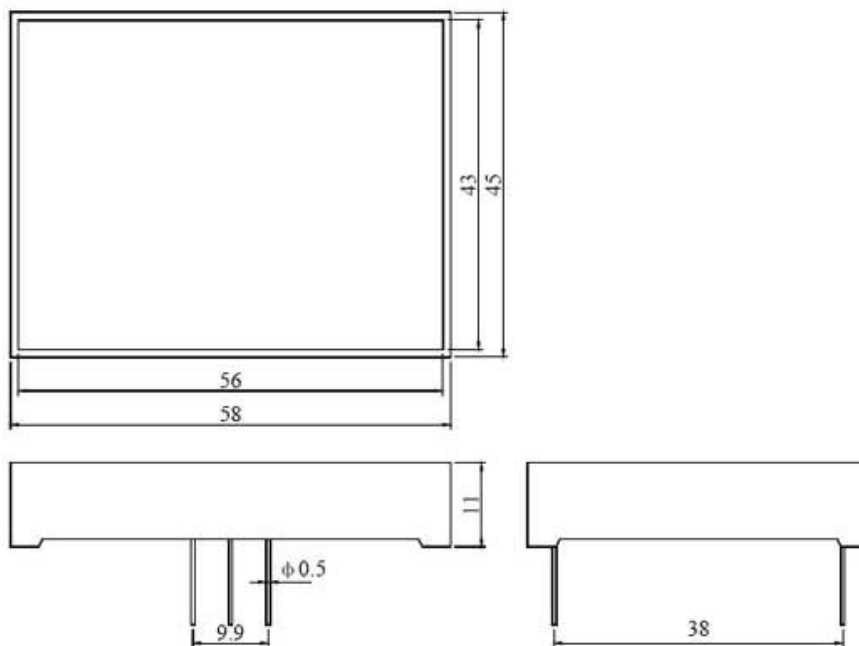
Notes: Soldering time ≤ 5 seconds.



◆ Electrical Optical Characteristics (Ta=25°C)

| Parameter | Symbol | Super Red | | Green | | Yellow | | Unit | Test Condition |
|--------------------------|------------------|-----------|-----|-------|-----|--------|------|------|----------------|
| | | Typ. | Max | Typ. | Max | Typ. | Max | | |
| Luminous Intensity | IV | 42 | -- | 21 | -- | 21 | -- | mcd | IF=10mA |
| Forward Voltage | VF | 7.4 | 9.2 | 8.8 | 10 | 8.0 | 10.0 | V | IF=20mA |
| Reverse Current | IR | -- | 50 | -- | 50 | -- | 50 | uA | VR=5V |
| Dominant Wavelength | λd | 645 | -- | 565 | -- | 585 | -- | nm | IF=20mA |
| Spectral Line Half Width | $\Delta \lambda$ | 30 | -- | 30 | -- | 30 | -- | nm | IF=20mA |

◆ Package Dimensions:





NOTES:

All dimensions are in millimetres (mm), Tolerance is $\pm 0.25\text{mm}$ unless otherwise noted.
Specifications are subject to change without notice.

◆ Internal Circuit

